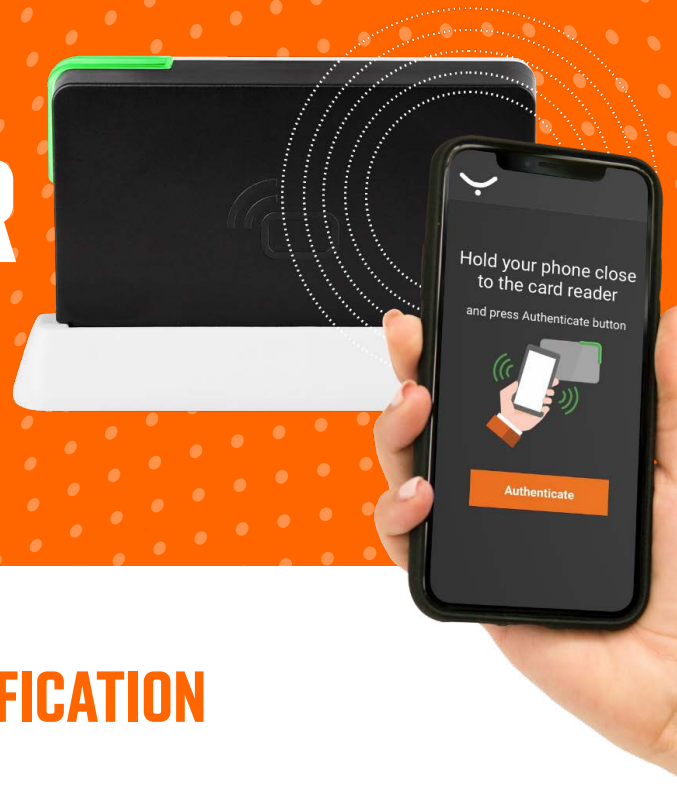


YSOFT MFX MOBILE READER



SECURE MOBILE IDENTIFY VERIFICATION FOR PRINTER ACCESS

The YSoft MFX Mobile Reader is an ideal solution for secure, two-factor identification verification when used with YSoft SAFEQ on networked printers and Y Soft 3D printers. The accompanying mobile app holds the user's credentials ensuring that the user's personal biometric or PIN is securely stored on their mobile device.

The MFX Mobile Reader provides a sanitary solution that eliminates the need for staff to touch the printer to identify themselves.

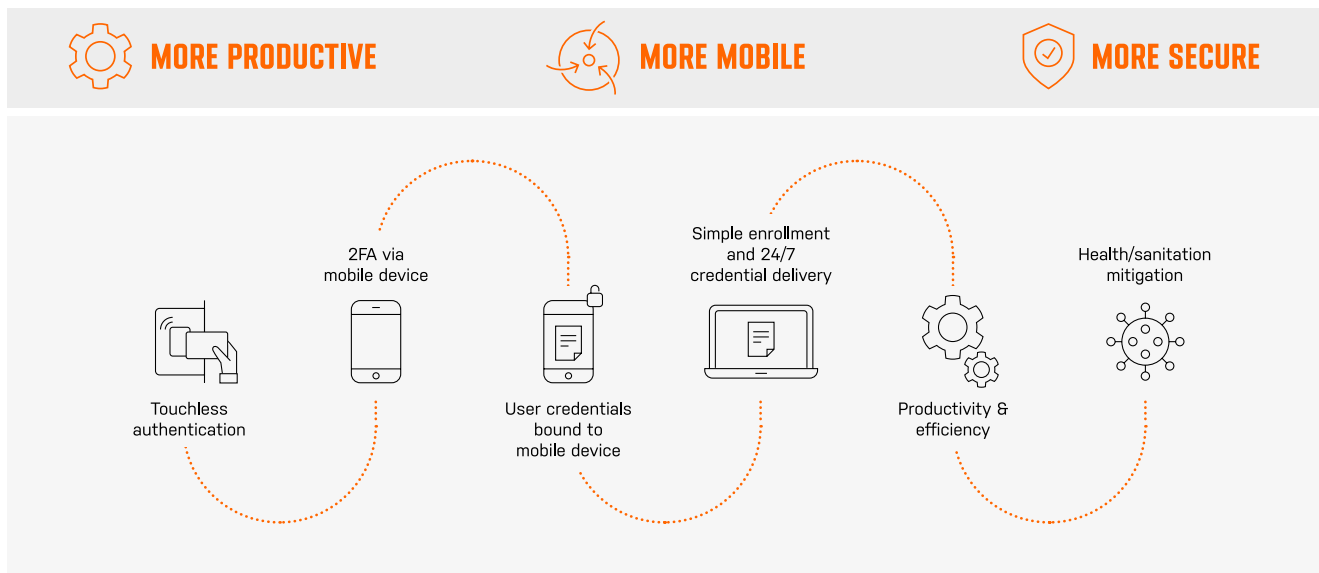
HIGHLIGHTS INCLUDE

- Uses the YSoft Mobile Connect™ app (free to download on iOS and Android) and YSoft Connect ID™ credentials making it easy for users to have their identify verified and credentials private. Identity cards can also be used
- Enclosed housing with a small footprint and RGB LED indicator lights
- In-field customizable and upgradable
- Custom configuration tool and card auto detection allows for fast and easy set up
- Multi-length, detachable cables and mounting kits available
- Designed for Y Soft products and services and may also be used on competitive print management systems

Y Soft designs, tests and manufactures the YSoft MFX Mobile in the European Union and provides global certifications and logistics through warehouses located in the Czech Republic, USA, China and Singapore.

DELIVERING SECURITY, EASE OF USE AND CONVENIENCE

With the MFX Mobile Reader's capabilities, organizations get the security of 2-factor authentication without worrying about GDPR compliance as the user's mobile phone provides the credentials. Users have a convenient way to print documents without touching the MFD.

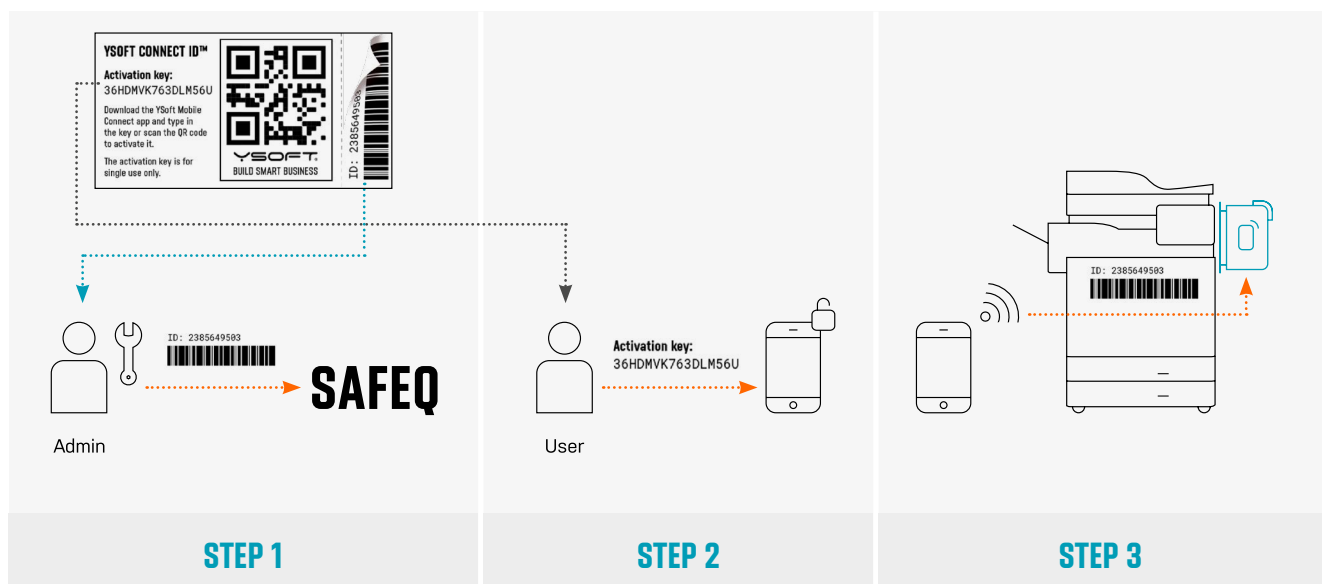


HOW IT WORKS

The MFX Mobile solution consists of three components:

- YSoft MFX Mobile Reader (hardware)
- YSoft Mobile Connect (mobile app)
- YSoft Connect ID (user credential vouchers)

- 1 The print administrator provides the user with the activation key portion of the credential voucher (or electronically) and stores the ID portion in SAFEQ or Active Directory similar to a traditional ID badge number.
- 2 The user enters the activation key (or scans QR code) in the Mobile Connect app.
- 3 The user is now set up for authentication at the MFD via the mobile device.



TECHNICAL DATA

| | |
|-------------------------|---|
| Reader Technology | Contactless |
| Frequency | 2.4GHz / 13.56MHz / 134.2kHz / 132kHz / 125kHz |
| Housing | Material ABS |
| Dimensions | 86mm × 51mm × 19mm |
| Power supply | 5V via USB |
| Current consumption | max. 500mA |
| Temperature range | Operating: +5°C to +35°C, Storage: 0°C to +50°C |
| Reading distance | Depending on the card technology and environment RFID: 30–100mm, BLE: < 1m |
| Host interface | USB 2.0 full speed (12Mbit) |
| OS support | Windows 2000 and higher, Linux kernel 2.6.32 or higher |
| Modes of operation | USB keyboard emulation, USB virtual COM port |
| User interaction | Beeper, RGB LED |
| Relative humidity | Operating: 20% to 85% non-condensing, Storage: 8% to 85% non-condensing |
| Certifications | CE (Europe) FCC (USA) ISED (Canada) UKCA (UK) ACMA+Radcomms (AU, NZ) IDA (Singapore) CITC (Saudi Arabia) WPC/BIS (India) SDPPI (Indonesia) MIC (Japan) SIRIM (Malaysia) NTC (Thailand) |
| Model number | MUS3078 |
| Annualized failure rate | < 0.5% |
| Weight | 61 g |

Your YSoft Partner



www.copytech.com.lb
sales@copytech.com.lb
+961 1 682 991